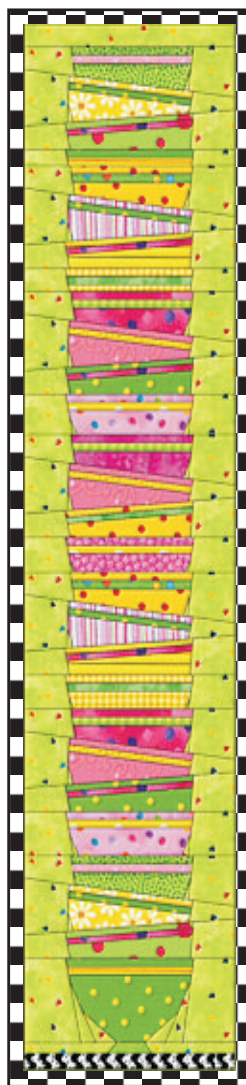




### Bowls with Borders Blog Hop

#### Paper Piecing Pattern

This is an excerpt from my Pattern Tool Box Piling Up! The entire 16 page tool box contains more options, appliqué pattern and a bunch of sewing tips. As a participant to the blog hop you get this pattern free for your personal use only. Please don't pass it on.



The following description refers to the full pattern.

You can pile up these little bowls as high as you like. This way you can make a loooong bell pull for calling the staff a la "Upstairs, Downstairs". You'll have to find your own butler, though.

You could also make about 6"x6" blocks with 1 to 4 bowls and arrange them horizontally for a long shelf. Or arrange blocks of various sizes as a quilt top. You have the choice of a paper piecing or appliqué pattern. With a decorative band or without. All bowls with the same glaze or all different - whichever you like best.

Add some flowers to decorate.

When paper piecing sew the chosen segments and join according to the diagram. Combine blocks and borders as desired. Quilt in the ditch and finish by adding a binding.

A color palette of light and bright pinks, yellows and greens will bring spring to your kitchen.

Or choose colors that match your kitchen, for example blue and white.

Your bowls might look like this →  
or like this. →  
It is a good idea to have a plan!



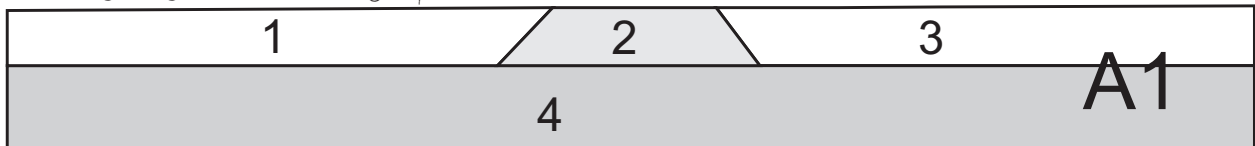
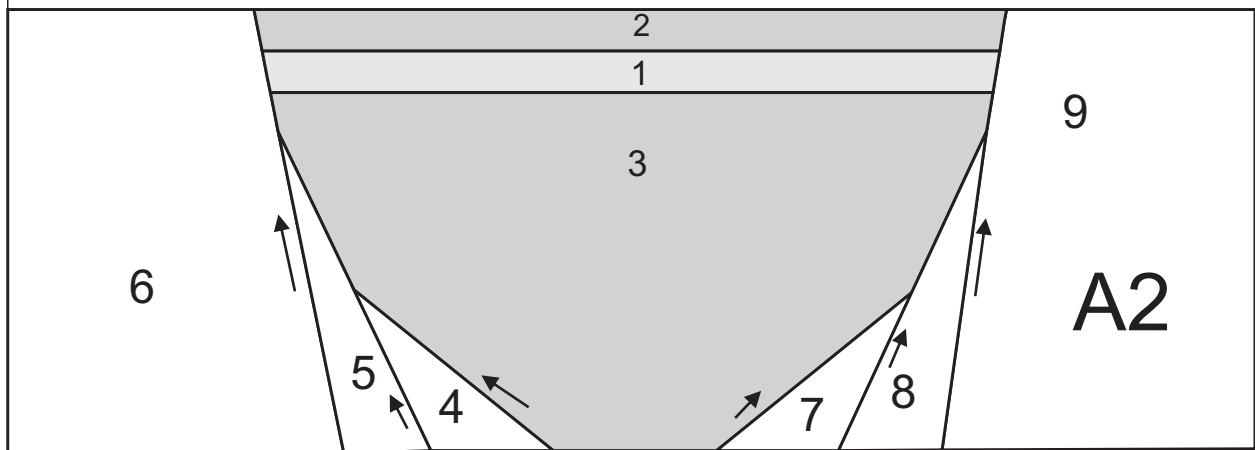
As Appliqué



Especially when dealing with large fabric pieces check out my paper piecing tips at [www.reginagrewe.de](http://www.reginagrewe.de)!

## Bowl Toolbox: The Base Bowl.

→ Arrows indicate the recommended sewing direction.



Original finished blocks measure 6 1/2" x 6 1/2".

You can easily change the size of the bowls to your needs by adjusting the page scaling in the printer settings of your computer or copier.

Here is the formula:

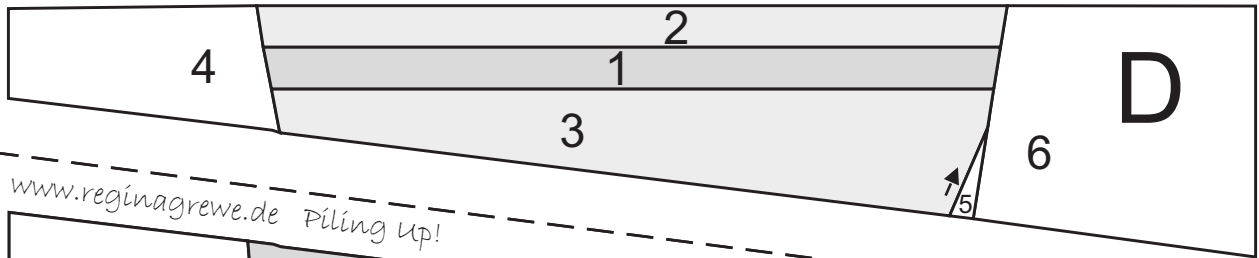
$(\text{Desired size}) / (\text{Actual size}) \times 100 = \text{percentage for scaling}$

Example: If you want to enlarge a block from its actual size of 6" to 8", you calculate:  $8" / 6" \times 100 = 133,33 \%$ .

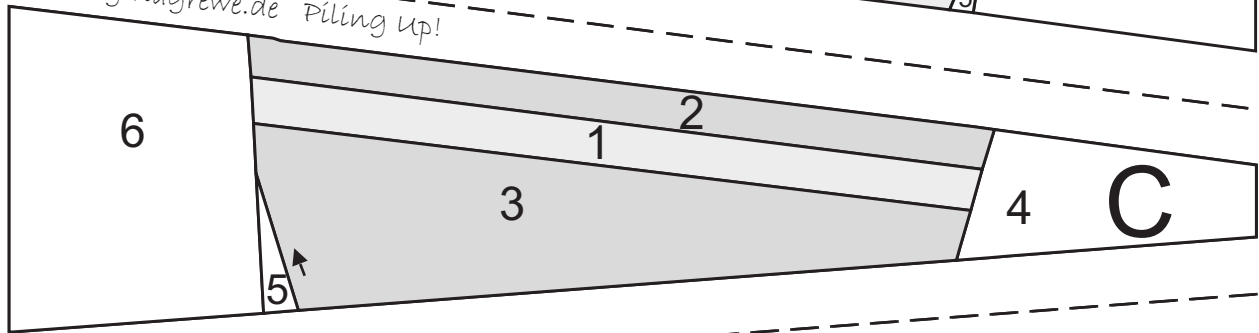


**Bonus:** In case you want to pile up really high, print this page.

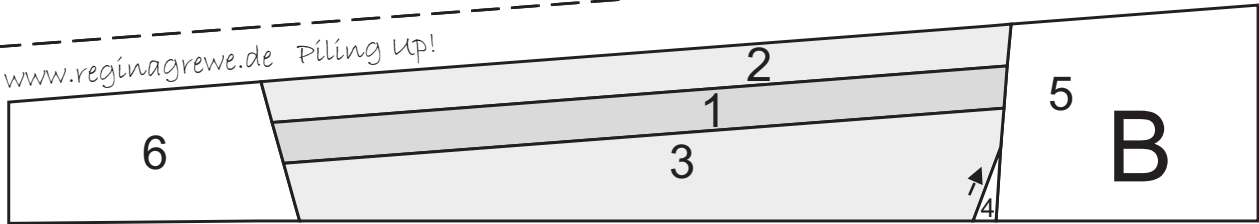
*www.reginagrewe.de Piling Up!*



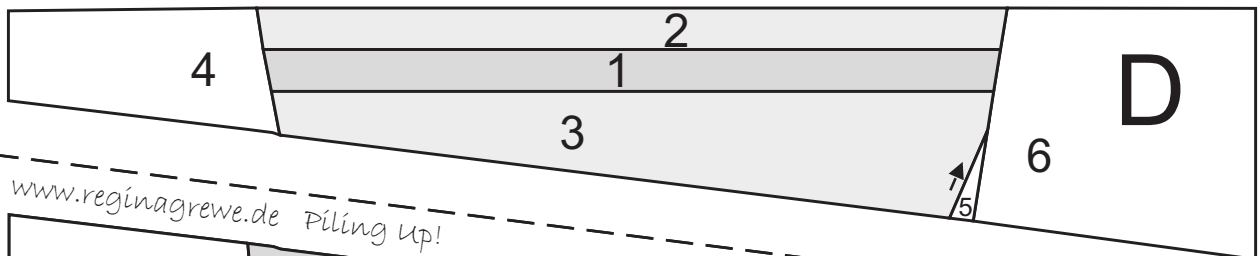
*www.reginagrewe.de Piling Up!*



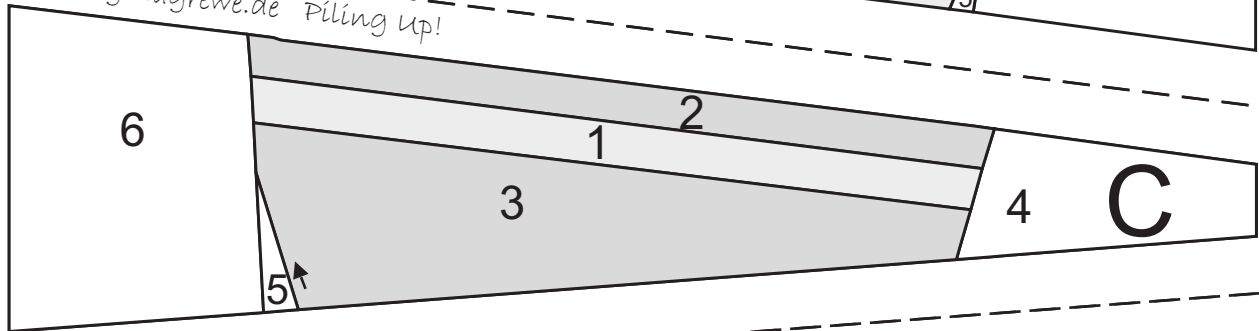
*www.reginagrewe.de Piling Up!*



*www.reginagrewe.de Piling Up!*



*www.reginagrewe.de Piling Up!*



*www.reginagrewe.de Piling Up!*

